



## 建造櫻桃街箱形雨水渠旱季截流器

### Construction of Dry Weather Flow Interceptor at Cherry Street Box Culvert

(工程合約編號 Contract No. DC/2017/01)

#### 工程背景 Project Background

源於九龍塘、旺角及油麻地區雨水排放系統的受污染市區徑流是導致新油麻地避風塘及九龍西部海岸水質變差，以及相關氣味問題的主要成因。現時，上述地區的雨水排放系統連接至櫻桃街箱形雨水渠，將雨水排放至新油麻地避風塘。因此，我們正在箱形雨水渠位於新油麻地避風塘海濱的出水口建造一個旱季截流器及泵房，堵截渠內受污染的市區徑流，並送往昂船洲污水處理廠作妥善處理及排放，紓緩氣味問題。

Polluted urban runoff from the stormwater systems that serve Kowloon Tong, Mong Kok and Yau Ma Tei districts is a major cause of the deterioration in water quality and associated odour problem at the New Yau Ma Tei Typhoon Shelter and coastal area of West Kowloon.

At present, the stormwater systems that serve the above districts are connected to the Cherry Street box culvert (CSBC) for discharging stormwater into the typhoon shelter. In view of this, we are constructing a Dry Weather Flow Interceptor (DWFI) and a pumping station at the outlet of the CSBC along the seafront of the typhoon shelter. They will intercept and pump the polluted stormwater from the CSBC during dry weather period to Stonecutters Island Sewage Treatment Works for proper treatment and disposal, thereby alleviating the odour problem.

#### 工程進度 Site Progress



用預製組件興建旱季截流器的維修走廊 Constructing the Maintenance Corridor of DWFI by prefabricated concrete modules

這一季，由於利用了預製組件，興建旱季截流器的維修走廊進度得以加快。預製組件在工場製造，再經由駁船運載到工地進行安裝，大大簡化了地盤繁複的工序，提升工程進度，並減低工程對公眾的影響。

In this quarter, the construction progress of the Maintenance Corridor was expedited by prefabricating the structure into concrete modules in off-site precast yard, and then transported to the site by barge. This method simplifies the construction process on site, improves the progress and reduces the disturbance to public.



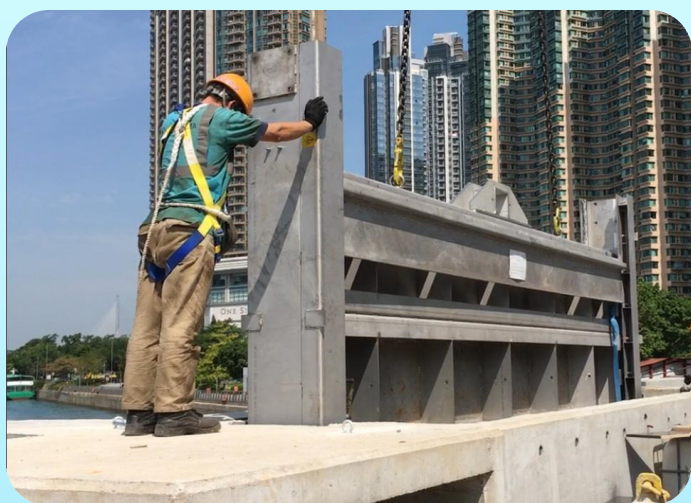
在工場製預製組件 Constructing pre-fabricated concrete modules at precast yard



正在工地進行安裝 Installing prefabricated concrete modules on site



## 安裝水閘 Installation of Penstock



旱季截流器內的水閘和其他機電設備在這一季開始安裝。

In this quarter, installation of penstock and other electrical & mechanical equipment in the DWFI was commenced.

正在進行水閘安裝  
Installing penstock at site



## 嶄新科技 Innovative Technology – 遙控清淤機械人 Desilting Robot

沙石、泥塵會隨雨水帶入箱形雨水渠，日積月累下會淤塞雨水渠，降低雨水渠的排洪能力。

我們積極採用嶄新科技。最近引入了新式遙控清淤機械人。機械人能潛入淹浸的箱形雨水渠，透過遙控在雨水渠內進行操作，利用接駁喉管直接將雨水渠內的淤泥泵回地面。此方法無須派遣工作人員進入密閉和淹浸的水渠，保障員工安全。由於不用截流，清淤工作亦不必限於旱季進行。淤泥經喉管泵出，可免臭味外溢。



遙控清淤機械人模擬圖 Simulation Diagram of Desilting Robot

Rainwater will bring sand and silt from the ground surface into the underground stormwater box culvert. From time to time the sand and silt will accumulate inside the box culvert and reduce its flow discharge capacity.

We have been proactively incorporating new technologies. A new remote-controlled desilting robot has been procured for silt clearing works. The remote-controlled robot is able to work in the submerged box culvert, and carry out desilting operations by pumping the silt to the ground surface through a discharge pipe. Workers working inside the confined and submerged box culvert is not necessary. Also, as this method does not require temporary flow diversion, desilting operations can be carried out not only in dry season. Enclosed silt pumping also prevents odour from being emitted.

本工程網站已面世！內容包括本工程的詳細資料，已派發的季度通訊以及工程中的各項創新科技。歡迎到網址 [www.cherrystdwi.com.hk](http://www.cherrystdwi.com.hk) 瀏覽。

Our project website has gone LIVE! Check out the project details. The website will be updated with the newsletters, and share the innovative construction technologies adopted in our project. You may visit the website for more information: [www.cherrystdwi.com.hk](http://www.cherrystdwi.com.hk)

