



### 建造櫻桃街箱形雨水渠旱季截流器

### Construction of Dry Weather Flow Interceptor at Cherry Street Box Culvert

(工程合約編號 Contract No. DC/2017/01)

## 工程背景 Project Background

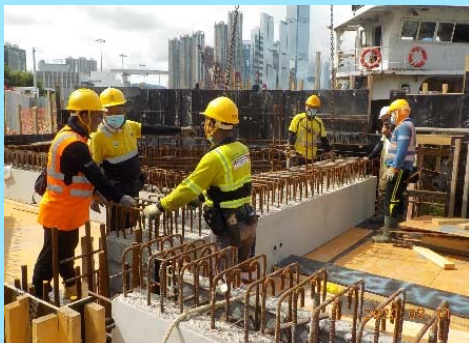
源於九龍塘、旺角及油麻地區雨水排放系統的受污染市區徑流是導致新油麻地避風塘及九龍西部海岸水質變差，以及相關氣味問題的主要成因。現時，上述地區的雨水排放系統連接至櫻桃街箱形雨水渠，將雨水排放至新油麻地避風塘。因此，我們正在箱形雨水渠位於新油麻地避風塘海濱的出水口建造一個旱季截流器及泵房，堵截渠內受污染的市區徑流，並送往昂船洲污水處理廠作妥善處理及排放，紓緩氣味問題。

Polluted urban runoff from the stormwater systems that serve Kowloon Tong, Mong Kok and Yau Ma Tei districts is a major cause of the deterioration in water quality and associated odour problem at the New Yau Ma Tei Typhoon Shelter and coastal area of West Kowloon.

At present, the stormwater systems that serve the above districts are connected to the Cherry Street box culvert (CSBC) for discharging stormwater into the typhoon shelter. In view of this, we are constructing a Dry Weather Flow Interceptor (DWFI) and a pumping station at the outlet of the CSBC along the seafront of the typhoon shelter. They will intercept and pump the polluted stormwater from the CSBC during dry weather period to Stonecutters Island Sewage Treatment Works for proper treatment and disposal, thereby alleviating the odour problem.

## 工程進度 Site Progress

### 預製組件 Design for Manufacture and Assembly (DfMA) Modules



用預製組件興建污水泵房  
Constructing the sewage pumping station by DfMA modules



安裝預製組件  
Installation of DfMA modules

這一季繼續安裝污水泵房的預製組件，預計在今年十二月底完成。預製組件大大減少在狹迫地盤內進行的工序，提升工程進度，並減低工程對公眾的影響。

In this quarter, installation of Design for Manufacture and Assembly (DfMA) modules for the construction of the sewage pumping station continues. It is targeted to complete by the end of December 2020. DfMA method simplifies the construction process on site, improves the progress and reduces disturbance to public.

## 嶄新科技 – 遙控清淤機械人 Innovative Technology – Remote-Controlled Desilting Robot



遙控清淤機械人 Desilting robot



機械人控制台 Control panel of desilting robot

遙控清淤機械人現已投入運作。機械人備有聲納系統，能探測箱形雨水渠內的環境，可在渠外遙控作業。此方法無須派遣工人進入密閉和淹浸的水渠內，清淤工作也不必限於旱季進行。

The remote-controlled desilting robot is now on duty for silt clearing works inside the box culvert. It equips with ultrasonic sensors to observe the environment such that it can be remotely controlled outside the box culvert. Assigning workers into the confined and submerged box culvert is not required. The silt clearing works are no longer restricted to dry seasons.



### 建造櫻桃街箱形雨水渠旱季截流器

### Construction of Dry Weather Flow Interceptor at Cherry Street Box Culvert

(工程合約編號 Contract No. DC/2017/01)

### 新工程合約大獎 NEC Awards 2020

本工程項目於今年六月獲頒新工程合約2020年度水務工程大獎。此獎項肯定了本項目的傑出成就，是全球同業的良好示範，並認同了工作團隊的努力。

In June 2020, our project won the NEC Awards 2020 – Water Contract of the Year. It recognizes excellence in our project's delivery and showcase examples of good practice through collaboration from across the world. It also recognizes the efforts from the project team.



### AUTODESK 2020年度建築訊息模型獎項 AUTODESK 2020 BIM Award

本工程項目於今年十一月獲香港AUTODESK頒發2020年度建築訊息模型(BIM)比賽的榮譽大獎。此獎項是為了嘉許建築業界人士在行內推動使用BIM技術，令行業邁向高效和可持續發展的新紀元。

在BIM的應用下，我們能準確地計劃、設計和推測施工效果。

In November 2020, our project won the AUTODESK Hong Kong BIM Award Honorable Mention. The award aims at recognizing professionals who are driving the industry's transformation through the use of building information modelling (BIM), and shaping the industry towards a more efficient and sustainable era.

With the aid of BIM, we were able to plan, design and predict construction outcome precisely.



模擬照片 BIM Simulation Project Photo

本工程網站已面世！內容包括本工程的詳細資料，已派發的季度通訊以及工程中的各項創新科技。歡迎到網址[www.cherrystdwfi.com.hk](http://www.cherrystdwfi.com.hk)瀏覽。

Our project website has gone LIVE! Check out the project details. The website will be updated with the newsletters, and share the innovative construction technologies adopted in our project. You may visit the website for more information: [www.cherrystdwfi.com.hk](http://www.cherrystdwfi.com.hk)



工程熱線: 9330 0868

